

2018 ASHNA Annual Conference

Road to Value



Our vision: Health for a better world

Our vision – **health for a better world** – is driven by a fundamental belief that health is a human right. We believe everyone deserves a chance to lead the healthiest life possible, especially those who are among the most poor and vulnerable in our society.



Where we serve

Providence Health & Services
Alaska



Providence Health & Services
Western Washington, including Swedish Health Services and Pacific Medical Centers





Providence Health & Services
Eastern Washington/Western Montana, including Kadlec Regional Medical Center

St. Joseph Health
Northern California (Humboldt, Napa, Sonoma Counties), including St. Joseph Heritage Healthcare



Providence Health & Services
Oregon
Providence Health Plan

Providence Health & Services
Southern California (Los Angeles County), including Facy Medical Foundation



St. Joseph Health
Southern California (Orange and San Bernardino Counties), including Hoag and St. Joseph Heritage Healthcare

St. Joseph Health
West Texas/Eastern New Mexico, including Covenant Health and Covenant Medical Group FirstCare Health Plans

How we serve



51
HOSPITALS



829
CLINICS



5m
UNIQUE
PATIENTS
SERVED



16
SUPPORTIVE
HOUSING
FACILITIES



119k
CAREGIVERS



38k
NURSES



25k
PHYSICIANS



2.1m
COVERED
LIVES



1.2m
HOME HEALTH
VISITS



HIGH SCHOOL
NURSING
SCHOOLS &
UNIVERSITY



2
HEALTH
PLANS

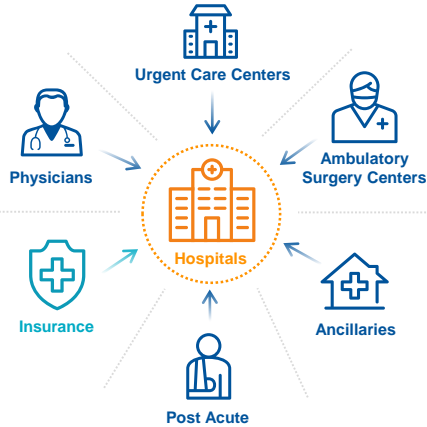


\$1.6b
COMMUNITY
BENEFIT

Providence St. Joseph Health: Building to Health 2.0



HEALTH CARE 1.0 (Past)

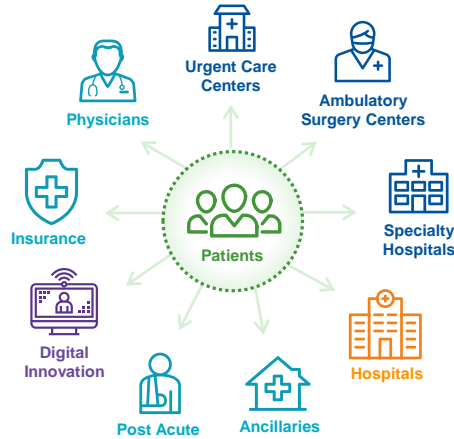


GEOGRAPHICALLY ANCHORED

Share of Inpatient Market

- All patient touch-points serve to feed hospital referrals
- System owns assets; reach is geographically and physically constrained

HEALTH CARE 1.5 (Present)



Share of Lives

- System utilizes multiple sites of care to manage patients and lives
- Digital innovation serves to enhance core
- Reach spreading beyond geographic and physical boundaries

HEALTH CARE 2.0 (Future)



Health Partners Share of Lives & Health Spend

- Patient and consumer centric, utilizing multiple sites of care as well as virtual services
- Digitally enabled to enhance the core and broaden system reach
- System engages in strategic partnerships more deeply
- New sources of revenue less dependent on payor reimbursement

6 ways PSJH is organizing for the future

- ✓ Expanding our ambulatory network
- ✓ Forming a new population health management company
- ✓ Becoming a services and solutions provider
- ✓ Building out the continuum of care
- ✓ Unconventional partnerships
- ✓ Modernizing administrative services